



4<sup>th</sup> July 2025

No. 283A, Nim Wan Road,  
Pak Nai Tsuen,  
Ha Pak Nai Education Centre  
Mr. CHENG Wai Kwan, Ken

**Re: A supporting letter for the continuous operation of the public outreach and education facilities at Ha Pak Nai Education Centre (Planning Application A/YL-PN/83)**

Dear Mr. Cheng,

I am writing to express my full support for the continued operation of the public outreach and education facilities at the Ha Pak Nai Education Centre, managed by your team and members of the local community.

Since 2009, I have been collaborating with the Ocean Park Conservation Foundation on the “Horseshoe Crab Rearing Program,” a school outreach initiative. In this program, mating pairs of tri-spine horseshoe crabs are induced to spawn in the laboratory at City University of Hong Kong. The resulting juveniles are then distributed to participating secondary schools, where students care for them in their school laboratories for approximately six months before releasing them into the wild during the summer. The program has been highly successful and well-received by participating schools.

In recent years, with the invaluable support of the Ha Pak Nai Education Centre, I have been able to obtain mating pairs from Ha Pak Nai for the breeding program. Additionally, I have conducted field manipulation studies in the area to investigate the natural mortality of juvenile horseshoe crabs and assess the impact of oyster rubble on their behavior and growth. These experiments would not have been possible without the Centre's support.

Over the past two years, I have also collaborated with the Chinese University of Hong Kong and the Ocean Park Conservation Foundation to explore the use of drone and AI technology to identify the foraging trails of juvenile horseshoe crabs during low tides in Ha Pak Nai. Our preliminary results have demonstrated an accuracy rate of over 90%. This innovative approach holds great promise for significantly improving the efficiency and precision of horseshoe crab population surveys.

The Ha Pak Nai Education Centre plays a vital role in supporting scientific research, conservation efforts, and public education. I strongly urge the continued operation and support of this important facility and I look forward to continued collaboration with the Ha Pak Nai Education Centre in advancing horseshoe crab conservation efforts in the years to come.

I would be grateful if the Planning Department could seriously consider this planning application (A/YL-PN/83).

Siu Gin CHEUNG (Prof.)  
Associate Professor  
Department of Chemistry  
City University of Hong Kong

[25-9-2025]

Dear Mr. Ken CHENG Wai Kwan,

On behalf of the MArch students of NM2050 at The Chinese University of Hong Kong, we would like to extend our heartfelt gratitude for your warm hospitality and generous sharing during our field visit to Ha Pak Nai on 15 September 2025. It was a meaningful and inspiring experience to learn directly from your dedication and efforts in protecting and restoring the unique coastal habitats of Pak Nai.

Our visit also reinforced for us the importance of the Ha Pak Nai Education Centre as a vital hub for conservation, research, and public engagement. We are impressed by your proactive effort in not only facilitating scientific research and ecological restoration but also in educating the public about responsible behaviour. By raising awareness, providing practical conservation opportunities, and guiding visitors with proper codes of conduct, your Centre has helped strengthen the resilience of Pak Nai's unique ecosystems and safeguard its biodiversity for future generations.

Witnessing the results of these efforts during our field trip left a lasting impression on all of us. We deeply appreciate how the Centre and its programs continue to engage both local communities and visitors, bridging the gap between ecological knowledge and active participation. The work that you lead has truly inspired us to consider how designers and architects can contribute meaningfully to environmental stewardship through our own practices.

Once again, we sincerely thank you for sharing your knowledge, passion, and vision with us. We hope that your valuable work at Ha Pak Nai Education Centre will continue to thrive, enriching biodiversity and fostering a stronger connection between people and nature.

Yours sincerely,

MArch Students of NM2050 Studio - School of Architecture

The Chinese University of Hong Kong

本署檔號

OUR REF.: EP/193/11/02/03

來函檔號

YOUR REF.:

電話

TEL. NO.: 2872 1757

圖文傳真

FAX NO.: 2872 0376

網址

HOME PAGE: <http://www.epd.gov.hk>

**Environmental Protection Department  
Environmental Infrastructure Division**

88 Victoria Road,  
Kennedy Town,  
Hong Kong.



環境保護署  
環境基建科

香港西環  
堅尼地城  
域多利道88號

新界元朗下白泥  
下白泥村公所  
下白泥村村代表  
鄭偉君先生

鄭村長：

下白泥村教育中心

環保教育活動

環境保護署與下白泥村村代表 鄭偉君先生一直以來都保持緊密聯繫，為改善下白泥村的環境事宜共同努力。

自下白泥村公所成立下白泥教育中心以來，積極籌辦各類環保教育活動，致力推廣生態及環保教育，對改善環境和促進可持續發展具有重要意義，造福社會。我們對此十分支持，如籌辦環保教育活動時，需要安排參觀本署的廢物處理設施，例如各堆填區，我們將樂意提供協助。歡迎聯絡本人、冼芯賢女士（新界西堆填區）（電話：2872 1682）或曾海頤女士（新界西堆填區擴建計劃）（電話：2872 1760）商討。

環境保護署署長

（林峻賢



代行)

2025年7月14日

8<sup>th</sup> July 2025

To: No. 283A, Nim Wan Road,  
Pak Nai Tsuen,  
Ha Pak Nai Education Centre  
Mr. Cheng Wai Kwan, Ken

**Re: Support on the continuous operation of the outreach and education facilities  
at Ha Pak Nai Education Centre (A/YL-PN/83)**

Dear Mr. Cheng,

On behalf of The Nature Conservancy (TNC) Hong Kong, I am writing to express our support for the continuous operation of the outreach and education facilities at Ha Pak Nai Education Centre, (i.e. A/YL-PN/83).

The mudflats of Pak Nai are with rich marine biodiversity and are considered an outstanding ecological hotspot in Hong Kong. A variety of coastal wetland habitat types are present including mangrove forests, oyster reefs, soft shore and Hong Kong's largest expanse of seagrass *Halophila beccarii*. Pak Nai is also Hong Kong's largest nursery and foraging grounds for globally endangered Chinese horseshoe crab species (*Tachypleus tridentatus*). As of today, although the areas are designated for oyster farming under a government short-term tenancy (STT2266), it is also a popular destination for local and overseas tourists for watching sunsets, as a result, the presence of on-going threats including illegal fishing practices, invasive species, marine and other aquaculture debris, and wildlife disturbance from unregulated tourism, compromise its ecological integrity.

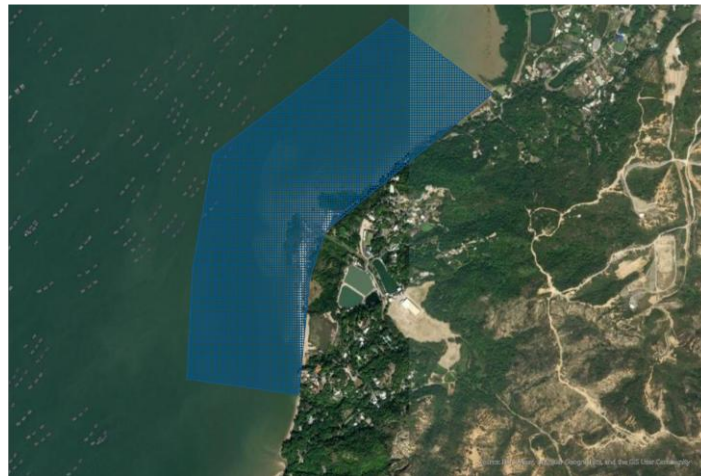


Figure 1. The 52 hectares of coastal area managed through community-based conservation, a collaboration between TNC, Ha Pak Nai Education Centre and local communities. (© TNC)



Figure 2. Chinese Horseshoe Crabs (*Tachypleus tridentatus*) at Pak Nai. (© TNC)  
[IUCN Red List Status: Endangered/ last assessed: 2018/ Population Trend: Decreasing]





Figure 3. Ocean Turf Grass (*Halophila beccarii*) at Pak Nai. (© TNC)  
[IUCN Red List Status: Vulnerable/ last assessed: 2007/ Population Trend: Decreasing]

Since 2021, The Nature Conservancy (TNC) Hong Kong, with the support of the you and the Ha Pak Nai Education Center, we have been successfully carrying out community-based conservation to restore and preserve the delicate ecosystems on site. With the manpower, venue and storage supports, and sharing of traditional local knowledge, as part of this community-based conservation, from the Ha Pak Nai Education Centre, the habitat management work, i.e. activities of oyster reef restoration, removal of invasive species, clean-ups of marine litter, and environmental education tours that tag along the school biology and geography curriculum, we has collaboratively engaged over 6,500 members of public to participate in hands-on volunteer activities, up to today, which enhance the biodiversity of Pak Nai. With the support from the center, TNC also trained over 50 university interns to conduct on-site visitor surveys and promote sustainable tourist behavior; and hosted field trips for over 1,500 students and teachers to learn about local biodiversity of Deep Bay.

The Ha Pak Nai Education Center, which is managed by you and members of the local community, had been serving as an important hub to support the aforementioned activities, and alongside your stewardship of the important ecological features at Ap tsai hang, has directly contributed to conservation success of the program. Notably, since these activities started in 2021, our scientific surveys have observed an over 190% increase in endangered horseshoe crabs. Hence, TNC believe the continuous operation of the facilities and its support to conservation works are crucial for both the local biodiversity and communities.



Figure 4. Decrease in areas occupied by invasive *Spartina cordgrass* (red) on Pak Nai's mudflats. (© TNC)



Figure 5. Increase in Horseshoe crab distribution on Pak Nai's mudflats from summer 2021 to summer 2024 (© TNC)

The community conservation program, alongside the Ha Pak Nai Education Center itself, has served as a model that we hope can inspire sustainable eco-tourism activities in Deep bay, especially given the current plans under the Northern Metropolis policy to develop the coastal areas from Tsim Bei Tsui, Lau Fau Shan and Pak Nai into a Coastal Protection Park system, which will focus on ecotourism and nature conservation. In this regard, the Ha Pak Nai Education Center has been a pioneer in instigating an ecotourism model that can benefit both local communities and local biodiversity, and retracting support to its operation would be short-sighted.



Figure 6. TNC school field trips supported by the centre (© TNC)

Attached is a list of some of the organizations that have been participating in TNC Pak Nai's activities from 2021 to 2025. If you have any questions, please feel free to contact me at [tom.chan@tnc.org](mailto:tom.chan@tnc.org).

Sincerely,

**ZUAW Tsz Kin**

Tom CHAN Tsz Kin  
Community Conservation Manager,  
The Nature Conservancy Hong Kong

Appendix A: List of organizations participated in TNC Pak Nai activities

Aberdeen Baptist Lui Ming Choi College	L'Oreal
Baptist Oi Kwan Social Service	La Salle College
Baptist Rainbow Primary School	Li Po Chun United World College of Hong Kong
Baptist Wing Lung Secondary School	Liu Chong Hing Investment Ltd
Bloomberg	Member's Care HKJC Volunteer Team
Capital Group	Morgan Stanley
Carmel Bunnan Tong Memorial Secondary School	Outdoor Wildlife Learning Hong Kong
City University of Hong Kong	Patagonia Hong Kong
City'super	PHC Wing Kwong College
College of Professional and Continuing Education,	Po Leung Kuk Life Planning & Financial
The Hong Kong Polytechnic University	Education Centre
Cordis, Hong Kong	Round Table Education
Deutsche Bank	Sacred Heart Canossian College
Germany Miele	Schroders Hong Kong
GreenPrice	Shun Tak Fraternal Association Tam Pak Yu
Hermès HK	College
HH Global	SKH Tin Shui Wai Ling Oi Primary School
HKBU Affiliated School Wong Kam Fai	St Stephen's College
Secondary and Primary School	Swire Coca-Cola
HKU SPACE Po Leung Kuk Stanley Ho	Tang King Po School
Community College	The Chinese University of Hong Kong
HKUGA College	The Hong Kong Institution of Engineers
Hong Kong Baptist University	The Hong Kong University of Science and
Hong Kong Red Cross Princess Alexandra School	Technology
Howden Insurance	The Swire Charitable Trust
Inspiring Girls Hong Kong	The True Light School of Hong Kon
J.P. Morgan Hong Kong	The University of Hong Kong
Jockey Club Man Kwan EduYoung College	The Y.W.C.A Hioe Tjo Yoeng College
Knight Frank	The Zubin Foundation
Kowloon Sam Yuk Secondary School	UBS Hong Kong
Kowloon True Light School	Wah Yan College Kowloon
Kwun Tong Maryknoll College	WWF-Hong Kong

-End-



No. 283A, Nim Wan Road  
Ha Pak Nai Tsuen  
Ha Pak Nai Education Centre  
Mr. CHENG Wai Kwan



Confirmation of Utilization of 下白泥村教育中心

Dear Mr Cheng,

This letter is to confirm our organization has been utilizing 下白泥村教育中心 (Centre) to conduct educational programmes during 2020-2023.

The Centre has provided us with a welcoming environment conducive to learning and community engagement. This has enabled us to offer workshops on intertidal mudflat and endangered horseshoe crab conservation, as well as field activities like a cleanup activity that advocate for enhanced educational outcomes.

Yours sincerely,

Josephine Wong  
Deputy Director